



215 Rice Street
P.O. Box 20,000
Grand Junction, CO 81502

970-244-3500 Phone
970-244-3503 Fax
www.sheriff.mesacounty.us

Civil/Criminal Process Fees

CIVIL

Summons, with or without complaint	
Petition and Answer	
Restraining Orders	
Interrogatories, Letter, Motion, Order, Demand for Payment (Service)	
Notices	\$35.00 plus mileage
Subpoena (Civil)	\$60.00 plus mileage
Subpoena Duces Tecum-Civil	\$60.00 plus mileage
Subpoena Duces Tecum-Criminal	\$35.00 plus mileage
Garnishments	\$20.00 plus mileage
Writ of Restitution	\$136.00 service plus mileage

Execution of Court Orders: Execution, Foreclosure, Forfeiture

Serve Notice of Levy & Writ	\$30.00
Issue & Record Certificate of Levy	\$30.00
Advertising of Sheriff's Sale	\$30.00
Certificate of Purchase	\$30.00
Report and Return	\$60.00
Confirmation/Sheriff's Deed	\$40.00
Certificate of Redemption	\$30.00

Commission according to worksheet is unchanged – refer to CRS 30-1-104

Serving/Levying Writ of Attachment, Order of Possession or Replevin - \$75.00 to start,
not to exceed actual expenses

Mileage on all Civil Matters	ZONE 1 \$7.50 ZONE 2 \$33.00
------------------------------	---------------------------------

CRIMINAL

Subpoena	\$7.50
Garnishment	\$20.00
Summons and all other Notices	\$15.00
Mileage on all Criminal Matters	ZONE 1 \$7.05 ZONE 2 \$31.02

RETURNED UNSERVED

CIVIL	\$20.00
CRIMINAL	\$5.00

FEES CHARGED BY THE MESA COUNTY SHERIFF'S OFFICE RELATING TO THE SERVICE OF PROCESS PURSUANT TO 2010 AMENDMENTS TO §§ 30-1-104, 30-1-105.5, 30-1

In accordance with the provisions of §§ 30-1-104, 105.5, 106, and 116 C.R.S., as amended, fees collected by the sheriff or his/her designated representatives, for serving and returning various writs and processes and performing other duties under state law shall be fixed as follows:

**MESA COUNTY SHERIFF'S OFFICE CIVIL SECTION
ACTUAL EXPENSE SCHEDULE**

In accordance with Colorado Revised Statute 30-1-104(2)... "actual expenses" means those personnel and processing costs incurred in the typing, processing, filing, and serving said process papers but not to include mileage.

MILEAGE

Mileage shall be charged at the mileage rate authorized for County officials and employees pursuant to § 30-11-107(1)(t), C.R.S., as amended, for each mile actually and necessarily traveled in serving each writ, subpoena, or other process in an action other than a criminal action. The Sheriff's Office will post the current mileage rate set by the Board of County Commissioners pursuant to § 30-11-107(1)(t), C.R.S., as amended, in a location accessible to the public pursuant to § 30-1-108, C.R.S., as amended.

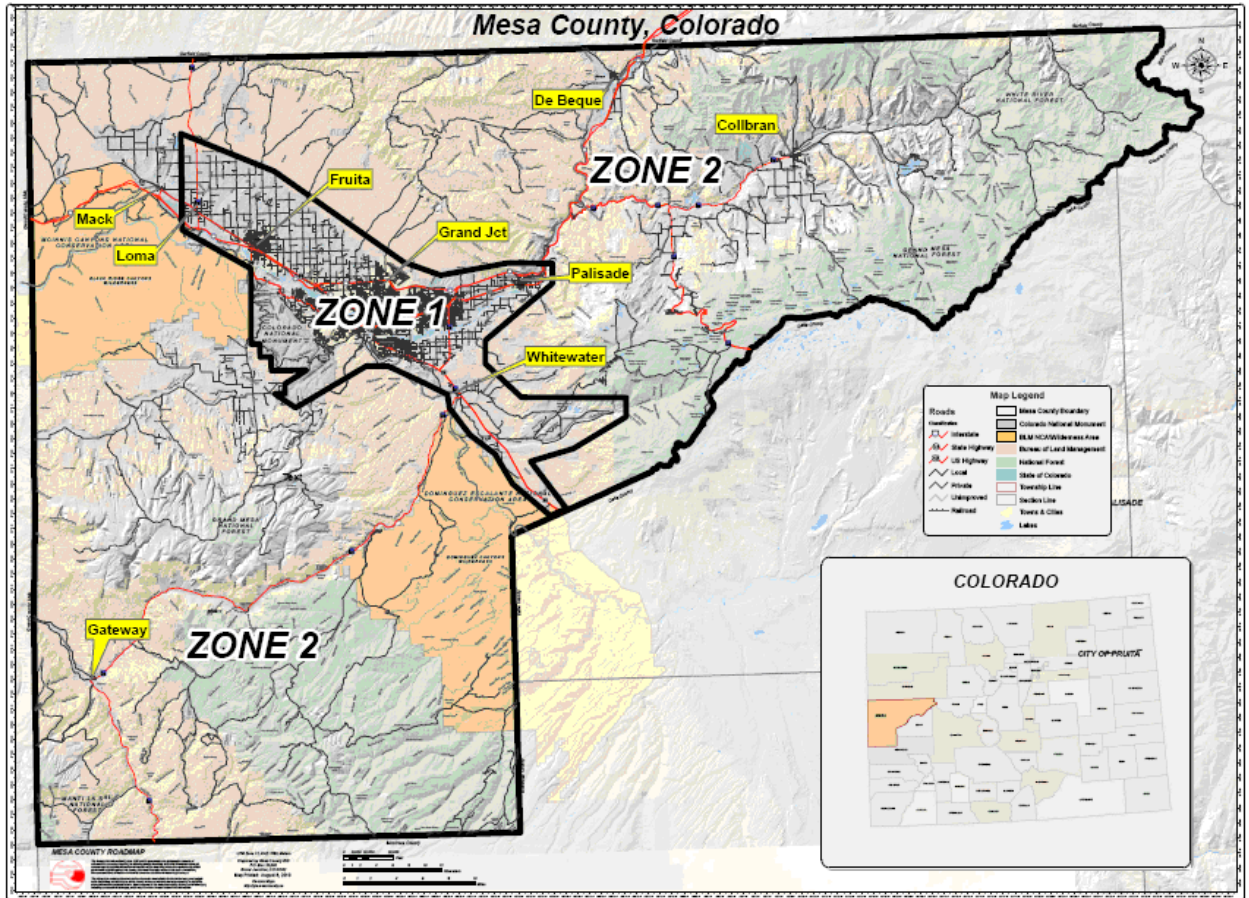
"Zone Based" mileage fees for the service of civil process by Sheriff's deputies are based on average roundtrip mileage from Mesa County Sheriff's Department, 215 Rice St, Grand Junction, to the Post Office locations within each zone. It is then rounded to the nearest mile.

The fee assessed will be calculated based upon the round trip mileage established for the address where the paper is to be served in the applicable zone, multiplied by the current mileage rate set pursuant to §30-11-107(1)(t), C.R.S. as amended. This is regardless of the number of attempts made, or the actual number of miles traveled by the deputy in effecting service per operational period, for that day. **It is the customer's responsibility to inform the Sheriff's Office Civil Section of the number of days to be attempted for each paper to be served. Please make a note of the number of attempts you are requesting and send the appropriate fees. Please call if you are unsure of the correct amount to send. (970-244-3521)**

Sheriff's Office Civil Section – Mesa County Sheriff's Office
215 Rice St, Grand Junction, Colorado 81501

ZONE ONE: 15 X \$.50 miles per round trip = \$7.50/attempt
ZONE TWO: 66 X \$.50 miles per round trip = \$33.00/attempt

Mileage Zones



Zone One includes: Palisade, Clifton, Whitewater, Grand Junction, Fruita, and inside city limits of Loma.