



215 Rice Street  
P.O. Box 20,000  
Grand Junction, CO 81502

970-244-3500 Phone  
970-244-3503 Fax  
www.sheriff.mesacounty.us

## Civil Fee for Service

Listed below is the fee structure for Civil Process Fees provided under CRS 30-1-104, in accordance with House Bill 10-1057, as approved by the Mesa County Board of Commissioners, Resolution MCM 2010-123. All fees are effective January 1, 2011.

### SUBPOENAS

Other than criminal action	\$ 60.00 + mileage
Criminal Action	\$ 7.50 + mileage

### SUMMONS AND COMPLAINT

Criminal Summons & Complaint	\$ 15.00 + mileage
Civil Summons & Complaint	\$ 35.00 + mileage
Writ of process in a criminal action	\$ 15.00 + mileage
Writ of process in non-criminal action:	\$ 35.00 + mileage
Serving each juror	\$ 10.00 + mileage
Writ of Garnishment	\$ 20.00 + mileage

### EVICCTIONS

Notice to Vacate or Demand for payment	\$ 35.00 + mileage
Summons and Unlawful Detainer (FED)	\$ 35.00 + mileage
Notice of Judgment for Possession	\$ 35.00 + mileage
Writ of Restitution	\$136.00 + mileage
(Includes posting, one hour move out time for two deputies)	
Deputy time for each additional hour per deputy	\$ 38.00

### SHERIFF'S SALE:

Notice of Levy/Seizure (service)	\$ 30.00 + mileage
Issue & record Certificate of Levy	\$ 30.00 + mileage
Order of Possession	\$ 75.00 + mileage
Writ of Assistance	No Charge
Writ of Attachment/Replevin	\$ 75.00 + mileage
Writ of Execution (service)	\$ 75.00 + mileage
Writ of Execution/Decree Sale (land)	\$100.00 + mileage
Writ of Execution/Sale of Personal Property	\$100.00 + mileage

### SHERIFF'S SALE: WITHOUT SALE

Certificate of Levy as needed/decree	
Foreclosure Only	\$ 30.00
Certificate of Redemption as needed	\$ 30.00
Certificate of Sale (personal property)	\$ 30.00
Publication	\$ 30.00
Sheriff's Deed (issuance)	\$ 40.00

### NON-SERVICE FEE

Non-Service-Civil	\$ 20.00 + mileage
Non-Service- Criminal	\$ 5.00 + mileage

**MILEAGE**

**FEES CHARGED BY THE MESA COUNTY SHERIFF'S OFFICE RELATING TO THE SERVICE OF PROCESS PURSUANT TO 2010 AMENDMENTS TO §§ 30-1-104, 30-1-105.5, 30-1**

In accordance with the provisions of §§ 30-1-104, 105.5, 106, and 116 C.R.S., as amended, fees collected by the sheriff or his/her designated representatives, for serving and returning various writs and processes and performing other duties under state law shall be fixed as follows:

**MESA COUNTY SHERIFF'S OFFICE CIVIL SECTION ACTUAL EXPENSE SCHEDULE**

In accordance with Colorado Revised Statute 30-1-104(2)... "actual expenses" means those personnel and processing costs incurred in the typing, processing, filing, and serving said process papers but not to include mileage. Mileage shall be charged at the mileage rate authorized for County officials and employees pursuant to § 30-11-107(1)(t), C.R.S., as amended, for each mile actually and necessarily traveled in serving each writ, subpoena, or other process in an action other than a criminal action. The Sheriff's Office will post the current mileage rate set by the Board of County Commissioners pursuant to § 30- 11-107(1)(t), C.R.S., as amended, in a location accessible to the public pursuant to § 30-1-108, C.R.S., as amended. "Zone Based" mileage fees for the service of civil process by Sheriff's deputies are based on average roundtrip mileage from Mesa County Sheriff's Department, 215 Rice St, Grand Junction, to the Post Office locations within each zone. It is then rounded to the nearest mile. The fee assessed will be calculated based upon the round trip mileage established for the address where the paper is to be served in the applicable zone, multiplied by the current mileage rate set pursuant to §30-11-107(1)(t), C.R.S. as amended. This is regardless of the number of attempts made, or the actual number of miles traveled by the deputy in effecting service per operational period, for that day. **It is the customer's responsibility to inform the Sheriff's Office Civil Section of the number of days to be attempted for each paper to be served. Please make a note of the number of attempts you are requesting and send the appropriate fees. Please call 970-244-3521 if you are unsure of the correct amount to send.**

Sheriff's Office Civil Section – Mesa County Sheriff's Office 215 Rice St,  
Grand Junction, Colorado 81501

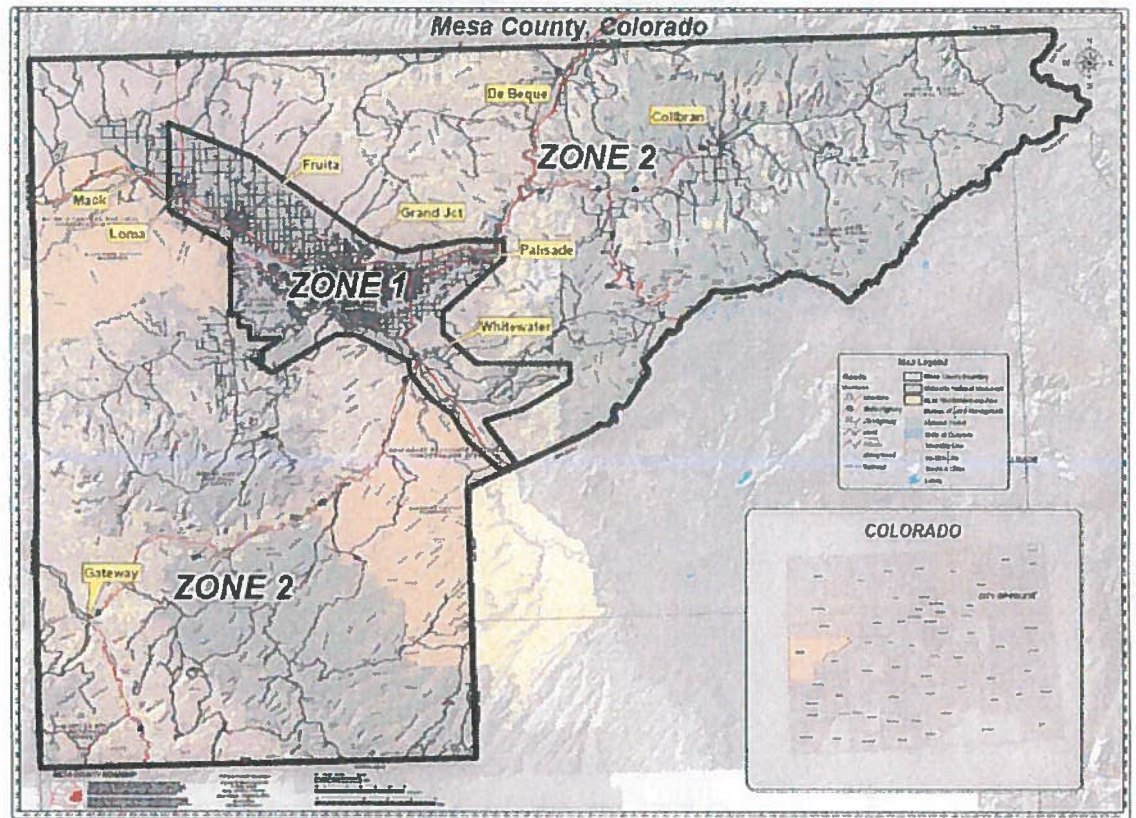
Mileage on all Civil Matters	ZONE 1: \$ 7.50 (per attempt)
	ZONE 2: \$ 33.00 (per attempt)
Mileage on all Criminal Matters	ZONE 1: \$ 7.05 (per attempt)
	ZONE 2: \$ 31.02 (per attempt)

**TWO OR MORE PAPERS SERVED ON THE SAME PERSON OR DIFFERENT PERSONS AT THE SAME TIME AND PLACE IN SAME ACTION:**

Pursuant to CRS 30-1-105.5, as amended, when two or more process services are to be served on the same person or different persons at the same time and place in the same action, the Sheriff shall charge the highest individual fee allowable pursuant to CRS 30-1-104, for the first process and an additional ten dollars (\$10.00) for each subsequent process served. The Sheriff shall charge the single mileage for the first service.

Revised May 2016

Mileage Zones



Zone One includes: Palisade, Clifton, Whitewater, Grand Junction, Fruita, and inside city limits of Loma.